



GREATGRANDCHILDREN; SIERRA COLE (HERCULES, CA), JAMES DUNN (BERKELEY,CA), LENYSE COLLINS (OAKLAND,CA) AND CARLOS JENKINS II (PINOLE, CA), IN ADDITION TO A HOST OF NIECES, NEPHEWS AND ADOPTED SONS, DAUGHTERS AND GRANDCHILDREN.

SHE IS PRECEDED IN DEATH BY HER HUSBAND JOHN STREET, PARENTS MARY AND WILLIAM SCOTT, SIBLINGS ANNA DANSBY, LONNIE SCOTT, WILLIAM SCOTT JR, AND NATHANIEL SCOTT.

TO KNOW HER WAS TO LOVE HER, IF YOU EVER CAME INTO CONTACT WITH ROSA YOU WOULD KNOW INSTANTLY HOW MUCH SHE LOVED PEOPLE. SHE WAS LOVING, COMPASSIONATE, ENDEARING, TRUSTWORTHY, MILD TEMPERED, LOYAL, HUMBLE AND HONEST. ROSA ACCEPTED GOD AT AN EARLY AGE AND CHRIST AS HER PERSONAL SAVIOR AND WAS SUCCESSFUL IN INSTILLING VALUE IN THOSE SHE LOVED. SHE NEVER CEASED TO PUT THE NEEDS OF OTHERS AHEAD OF HER OWN. WHENEVER ASKED "HOW ARE YOU?" SHE WOULD ALWAYS REPLY "FINE AND HOW ARE YOU?" WITH A GENUINE INTEREST IN WHAT WAS REALLY HAPPENING WITH YOU. SHE MADE SO MANY SACRIFICES AND CONTRIBUTIONS TO EVERYONE, BUT NO ONE KNEW THIS MORE THAN THE FAMILY THAT SHE SO LOVINGLY CHERISHED.

ROSA WAS A WOMAN WHO WORE MANY HATS. THAT OF A MOTHER, GRANDMOTHER, GREAT-GRANDMOTHER AND FRIEND. IN THE COMMUNITY SHE WAS COMMONLY REFERED TO AS GRANDMA, GRAMMY, GRANDMA STREET AND MAMA. SHE ADOPTED MANY. SHE WAS ALWAYS AVAILABLE. WHETHER IT WERE A CUP OF COFFEE, A HOT MEAL OR JUST SOMEONE TO TALK TO, HER DOORS WERE ALWAYS OPEN AND

SHE EMBRACED THE ENTIRE COMMUNITY. IT WAS NOT UNCOMMON FOR HER TO HAVE A FULL HOUSE. IT SEEMS EVERYONE HAD THE TENDENCY TO MIGRATE THERE. HER FAMILY MEANT THE WORLD TO HER AND SHE MEANT THE WORLD TO HER FAMILY.

A GRANDMOTHERS LOVE

A TENDER KISS, AN AFFECTIONATE HUG

ARE JUST A FEW WAYS TO DESCRIBE MY GRANDMOTHER'S LOVE.

NEVER WEARY, NEVER TIRED NO MATTER THE DAY NOR THE HOUR.

HER DOORS WERE ALWAYS OPEN, HER HEART WAS NEVER CLOSED

IF YOU ASK ANYONE MY GRANDMOTHER WAS NEVER INDISPOSED.

WORDS OF WISDOM, LESSONS FOR LIFE,

LIKE HOW TO BE A WOMAN AND HOW TO BE A WIFE.

HOW GRATEFUL I AM FOR THE LESSONS SHE INSTILLED IN ME.

THE MEMORY OF ONE SO SPECIAL IS NEVER TO FAR OFF,

FOR WHEN I SEARCH I FIND WHAT WE CULTIVATED NESTLED RIGHT

HER IN MY HEART.

FOREVER GRATEFUL,

MISSY

# Previous Events

## Visitation

MAY 2. 10:00 AM - 11:00 AM (PT)

Harris Funeral Home Legacy Center  
1331 San Pablo Ave.  
Berkeley, CA 94702  
(510) 525-1331  
<http://www.harrisfuneralhomelegacycenter.com>

## Service

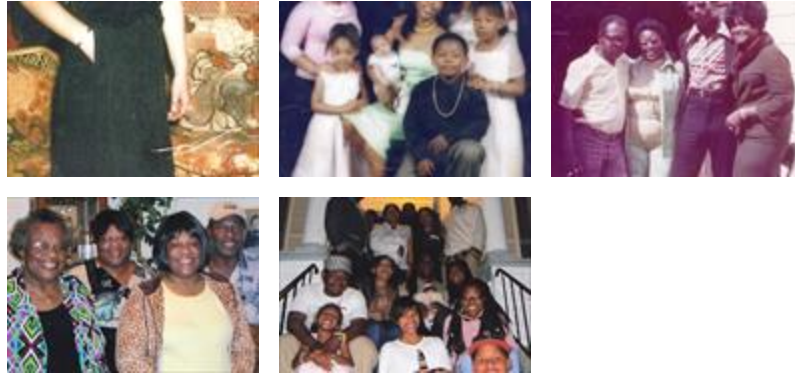
MAY 2. 11:00 AM (PT)

Harris Funeral Home Legacy Center  
1331 San Pablo Ave.  
Berkeley, CA 94702  
(510) 525-1331  
<http://www.harrisfuneralhomelegacycenter.com>

# Tribute Wall



“ 40 files added to the album Memories Album



---

Harris Funeral Home - April 01, 2015 at 04:15 PM